

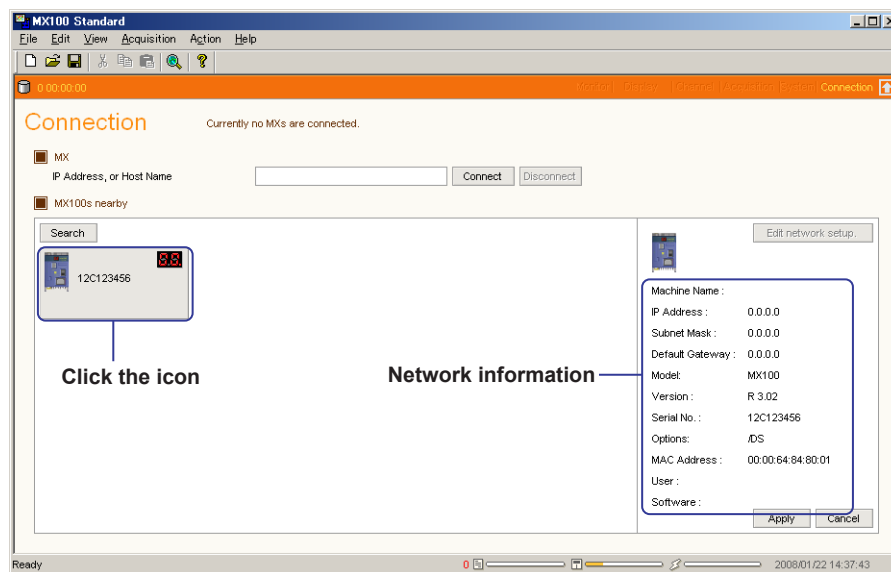
Please make the following alterations to the Operation Guide IM MX100-02E (see underlined text).

## ■ Page 4 “Notes”

- This manual describes the MX100 style number “S3,” and release number “R3.02” of the MX100 Standard Software.

## ■ Page 27 “When Connecting for the First Time”

The default IP address and subnet mask values in step 4 have been changed as in the figure below.



The underlined part in step 5 has been changed.

The default value of the IP address, subnet mask, and default gateway is 0.0.0.0. A connection to the network cannot be made if the default IP address and subnet mask values are used. For example, the IP address could be changed to 192.168.1.XX (where XX is 1 to 99 or 101 to 254), and the subnet mask could be changed to 255.255.255.0. The default gateway is set to 0.0.0.0 (default value).